



SAFE • ROBUST • DURABLE

x-Glo Portable Reel Solution



30m x-Glo-66-36vDC-HS (heat sensor)

1 x PS-300W-36VDC

1m SJTW cable & Connector

Size : 420*325*400mm

Weight - frame 6KG+ LED driver 2KG+LED strip 4.0KG = total 12KG ;

IP rating: IP65



x-Glo Portable reel systems comes pre-installed with a 300W-36vDC power supply and 30m of the x-Glo-66-36vDC-HS strip light – The LED strip light will be protected from overheating and burning if left on while rolled up on the reel. This is due to the inclusion of the heat sensor in the design of the LED strip light.

Each reel comes with a 1m SJTW cable pre-fitted with a plug and quick connector for ease of use.

The versatile and easy to use portable reel system will become an invaluable tool for any operation.

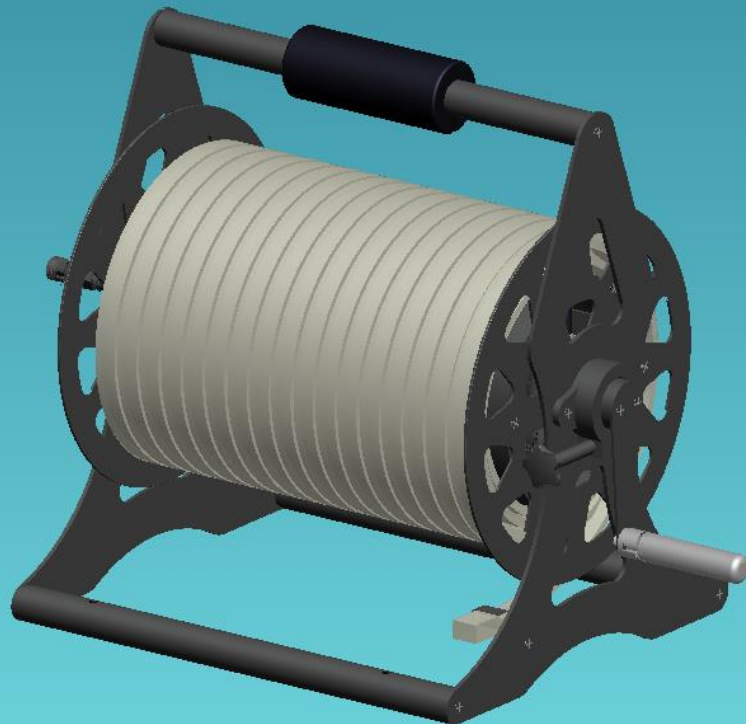


Overall product appearance:



Overall parameter

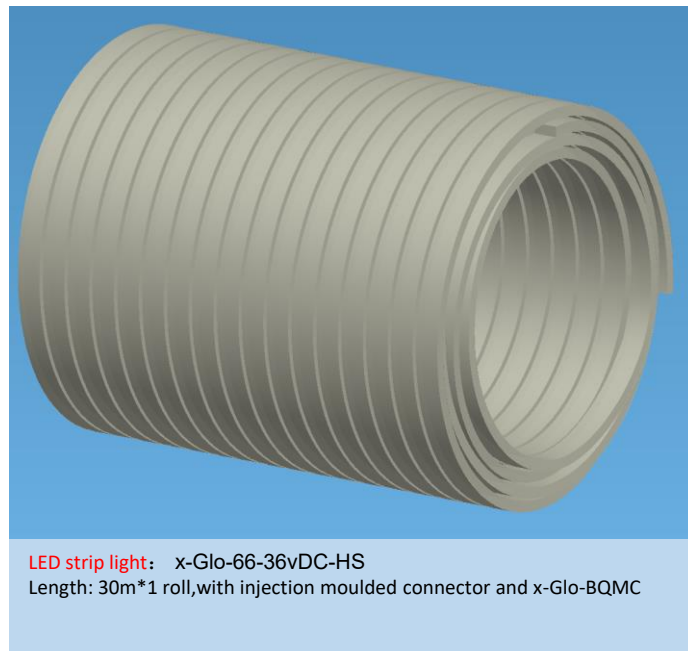
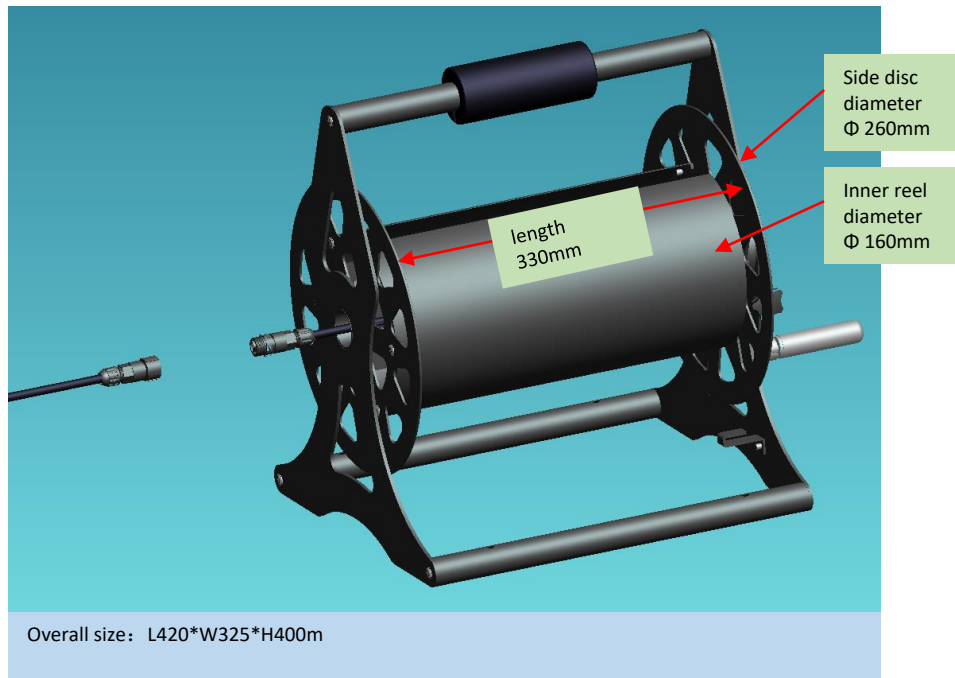
1. Size: 420*325*400mm
2. Led strip light length: 30m*1 roll
3. Weight: frame 6KG+ LED driver 2KG+LED strip 4.0KG
total **12KG**;
4. IP rating: IP65





SAFE • ROBUST • DURABLE

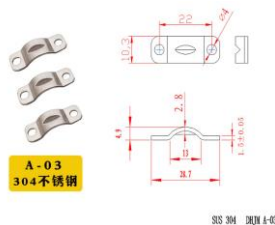
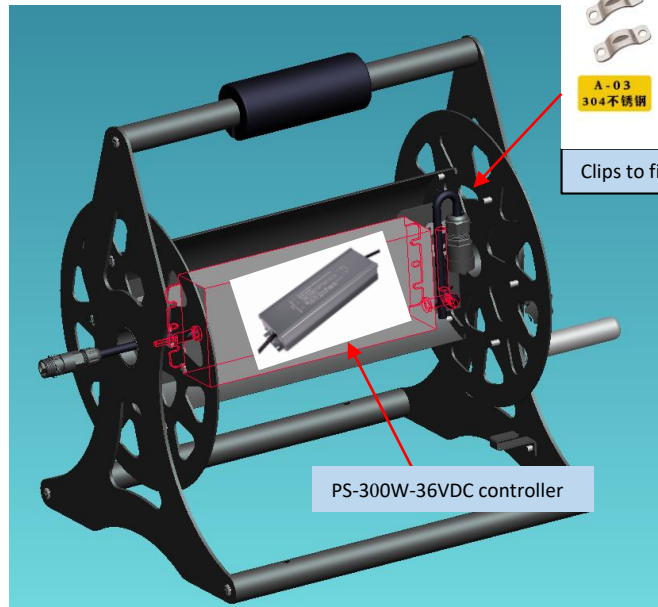
Details:



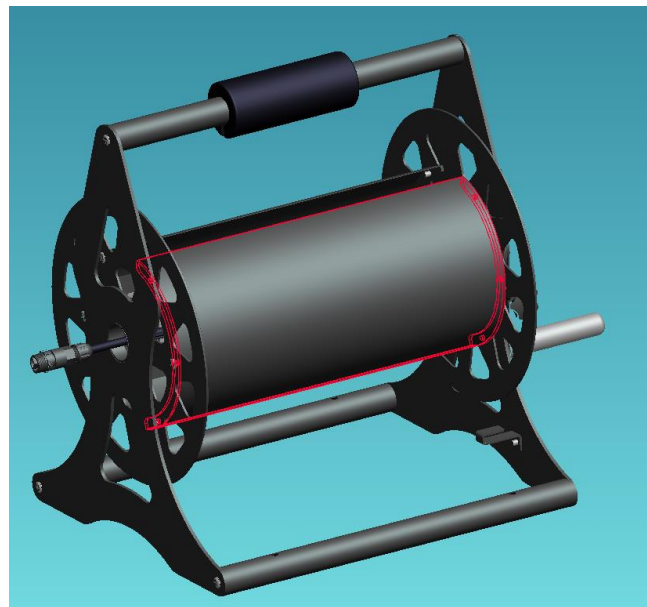


SAFE • ROBUST • DURABLE

Inner Structure:



Clips to fix the cable.



2 . Factory installation: Install the cover of the frame and lock the screws on both sides.



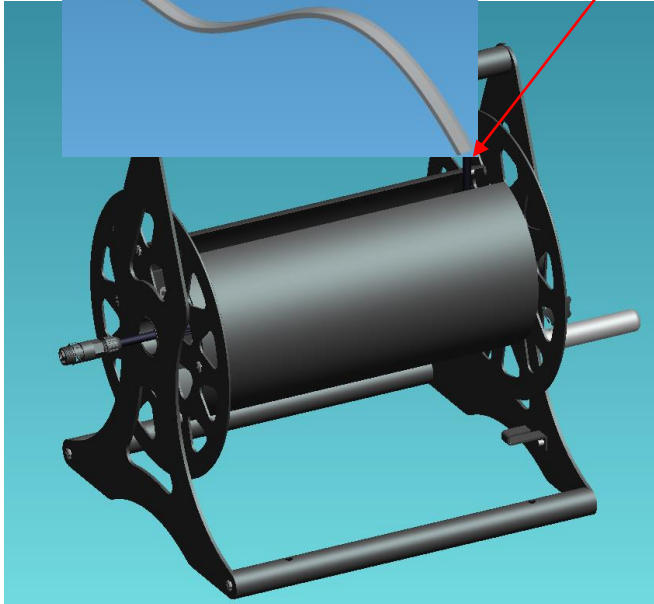
1 . Factory installation, CLEAR Install the LED driver inside the frame. The LED driver has 2-pin x-Glo-BQFC on the DC36V output side and 3-pin connector on the AC110V/220V input side.



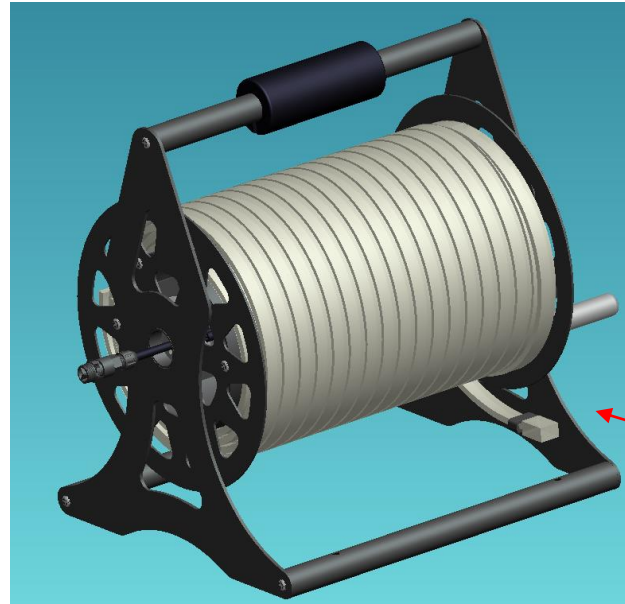
SAFE • ROBUST • DURABLE

Inner Structure:

LED strip light with 2-pin x-Glo-BQMC

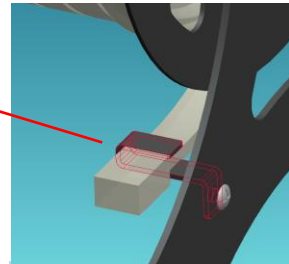
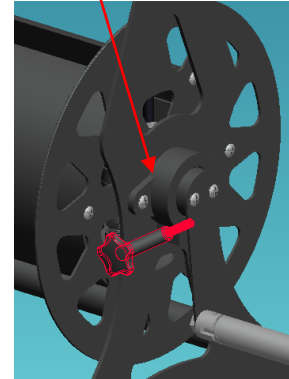


3. Factory installation: Plug the x-Glo-BQMC (which attached on the LED strip light) to the x-Glo-BQFC (which attached on the LED driver.)



4. Factory installation: Roll the light tape reel onto the reel, then lock the reel to prevent it from turning.

This is the lock which can fix the reel in position when tightened. Loosening the lock will enable the reel can turn.

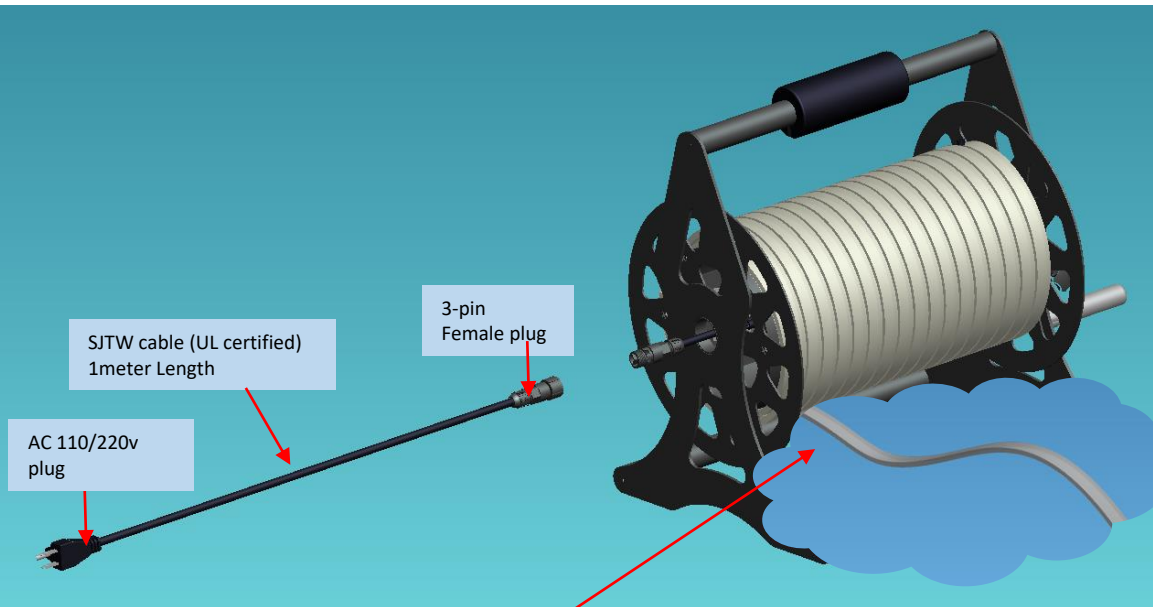


The LED strip light can be fixed in this clip.

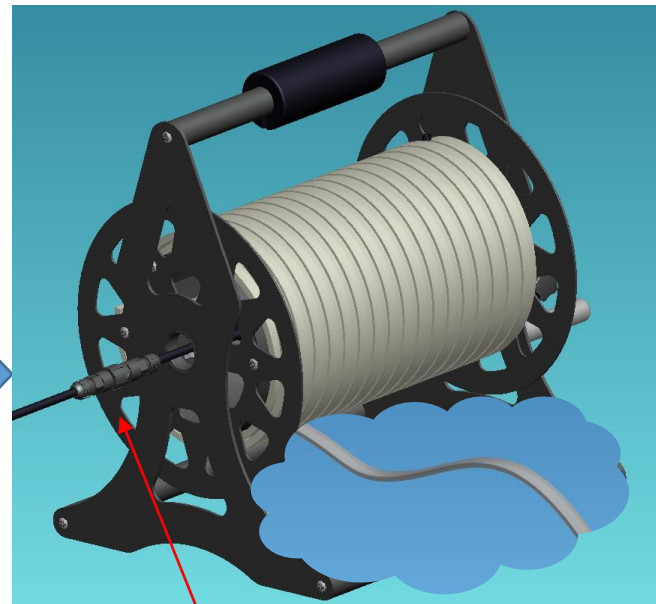


SAFE • ROBUST • DURABLE

Operation Instruction:



Site Operation Step-1. Unclip the clip of the reel, Take the LED strip lights off(End cap side). Turn the handle and pull the LED strip light to the desired length



Step-2 . After pulling the LED strip lights out, please plug the male & female connector, then plug the plug to the AC110V / AC220V, finally turn on the light.