

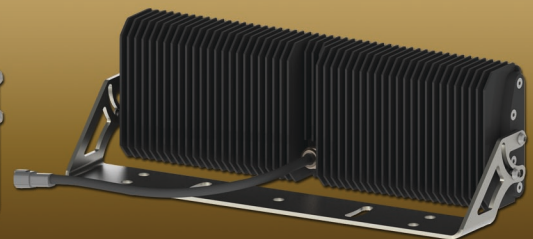
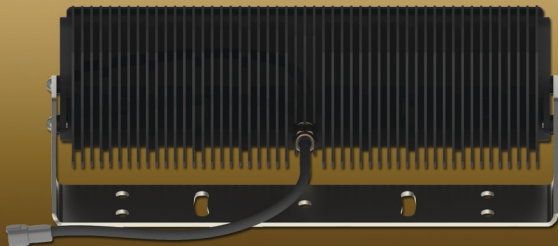
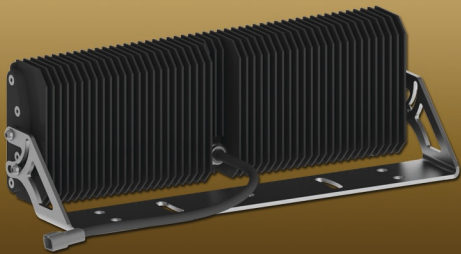
CERO

HD-80 HEAVY DUTY

- Replaces 1000W HID
- 415W Max Power
- 8-32VDC Input
- 90-305VAC Option
- 100% Rebuildable
- Extremely Reliable
- Aerospace Construction
- Made in USA 



MOST POWERFUL HEAVY DUTY LED FLOODLIGHT ON THE PLANET



- REPLACEMENT FOR 1000W METAL HALIDE LAMPS -

The HD-80 is the pinnacle of LED light output. Boasting over 32,000 lumens of output in the 415W model, it is by far the most powerful heavy duty LED lamp in the world. Incorporating 6 independently managed protection circuits, 26 auto-bypass links and 80 high-performance LEDs, the HD-80 is meant to be put onto critical production machinery. For heavy production equipment where lamp mounting locations are inaccessible, there is only one solution worth more than its weight in gold....the Cero HD-80.

STANDARD FEATURES

- CNC Machined Aerospace Aluminum is strong yet lightweight
- Stainless Steel Brackets and Hardware are durable and corrosion resistant
- Hardened and Tempered Pyrex Lens (Lexan Lens Optional)
- Mil-spec Anodized For Protection
- Advanced 6-Zone Thermal Management
- Transient Voltage Protection
- Over/Under Voltage Protection
- ZERO EMI Emission
- Gold Plated Electronics and Connector

OPTIONAL FEATURES

- Powdercoated Chassis and Bracket
- 4 Optical Beam Patterns
- Hardened Pyrex or Lexan Lenses
- 2 Different Power/Output Levels
- White, Amber, Red or Infrared Light
- 24VDC or 90-305VAC (50/60Hz) Input Voltages
- Type III Anodized Chassis and Bezel
- Black Chromium Plated Hardware
- Custom Mounting for Any Application

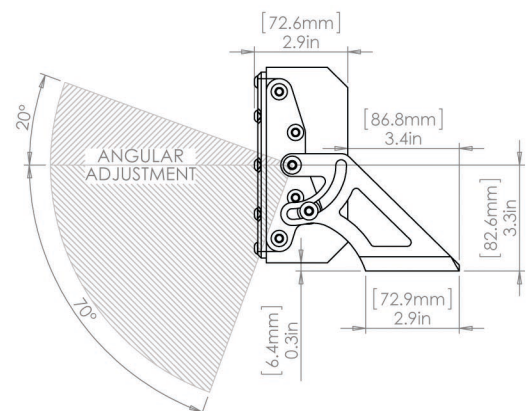
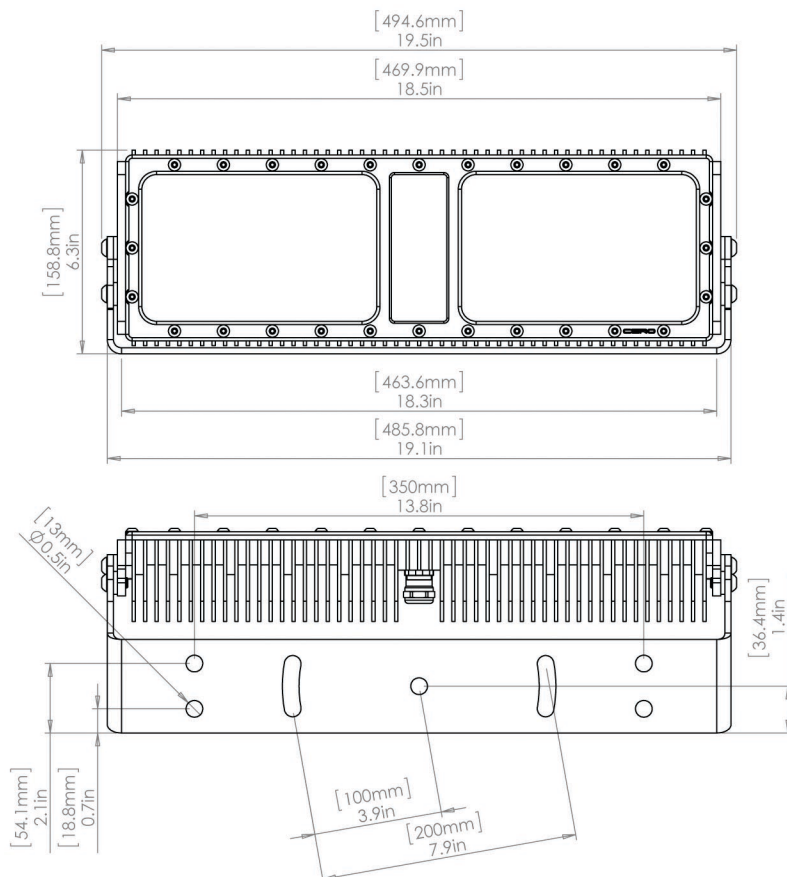
HD-80

HEAVY DUTY

	SPECIFICATIONS	
	HD80-270W	HD80-415W
Power	270W	415W
Operating Voltage	20-32VDC or 90-305VAC	
Raw Lumens	31,600	42,660
Effective Lumens	24,800	33,480
Current @28VDC	9.7A	14.8A
Lifetime (hrs)	85,000	55,000

Trunnion Style	Double
Weight w/ Lexan Lens	15.88 lb (7.06kg)
Weight w/ Pyrex Lens	16.40 lb (7.29kg)
Shock Handling	>20G RMS
Sealing	IP69K
Tilt Angles	-70° to +20°

DIMENSIONS



BEAM PATTERNS



SPOT
11°



MEDIUM
26°



H ELLIPTIC
36 × 23°



WIDE
46°