
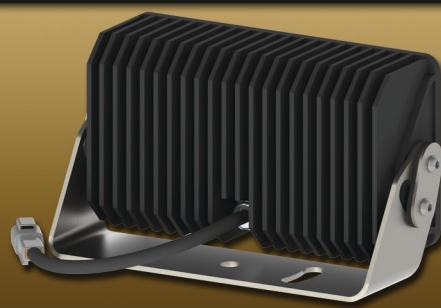
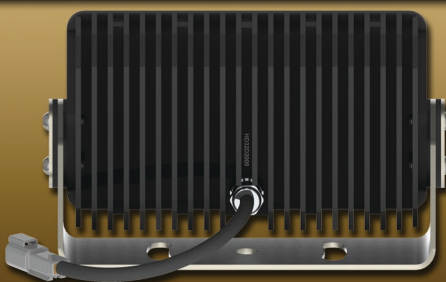
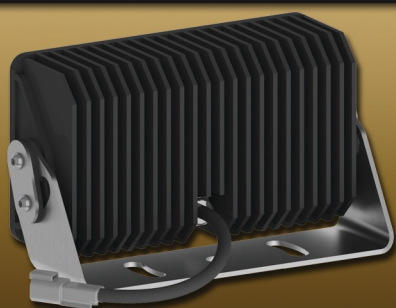


CERO

HD-32 HEAVY DUTY



- Powerful Floodlight
- Replaces 1000W Halogen
- 170W Max Power
- 9-32VDC Input
- 12,300 Lumen Output
- 100% Rebuildable
- Aerospace Construction
- Made in USA 



- HIGH POWER FLOODLIGHT FOR TRACKED EQUIPMENT -

The HD-32 was designed to replace inefficient 1000W Quartz Halogen floodlights while dramatically increasing light output and longevity and extending service life to well over 50,000 hours. It is the perfect light for large tracked equipment requiring smooth high-contrast lighting in a large area that also requires a light that can withstand large amounts of vibration in a broad frequency range.

STANDARD FEATURES

- CNC Machined Aerospace Aluminum is strong yet lightweight
- Stainless Steel Brackets and Hardware are durable and corrosion resistant
- Hardened and Tempered Pyrex Lens (Lexan Lens Optional)
- Mil-spec Anodized For Protection
- Advanced Thermal Management
- Transient Voltage Protection
- Over/Under Voltage Protection
- ZERO EMI Emission
- Gold Plated Electronics and Connector

OPTIONAL FEATURES

- Powdercoated Chassis and Bracket
- 4 Optical Beam Patterns
- Hardened Pyrex or Lexan Lenses
- 3 Different Power/Output Levels
- White, Amber, Red or Infrared Light
- 24V or Multi-Volt DC Input Voltages
- MIL-C-26482 Series II Connector
- Type III Anodized Chassis and Bezel
- Black Chromium Plated Hardware

HD-32

HEAVY DUTY

	SPECIFICATIONS		
	HD32-170W	HD32-110W	HD32-70W
Power	170W	110W	70W
Operating Voltage	18-32VDC	9-32VDC or 18-32VDC	
Raw Lumens	15,560	13,560	9,500
Effective Lumens	12,300	10,700	7,500
Current @28VDC	6.1A	3.9A	2.5A
Current @14VDC	N/A	7.9A	5.0A
Lifetime (hrs)	55,000	75,000	105,000

Trunnion Style	Double
Weight w/ Lexan Lens	5.13 lb (2.28kg)
Weight w/ Pyrex Lens	5.29 lb (2.35kg)
Shock Handling	>50G RMS
Sealing	IP69K
Tilt Angles	-20 to +40°

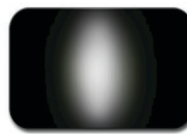
BEAM PATTERNS



SPOT
11°



MEDIUM
26°



V ELLIPTIC
23 x 36°



WIDE
46°

DIMENSIONS

