


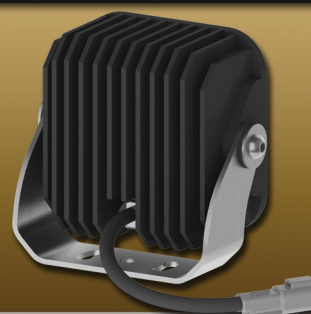
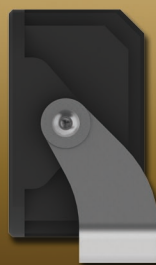
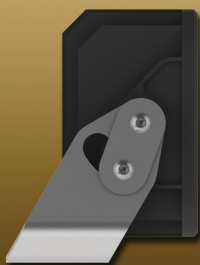
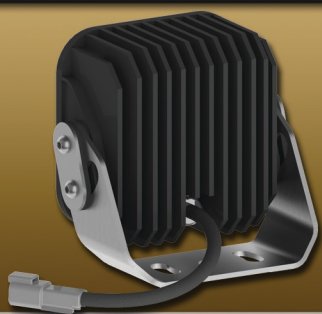
# CERO



## HD-16 HEAVY DUTY

- Big Power - Small Size
- Versatile Mounting
- 85W Max Power
- 9-32VDC Input
- 6,300 Lumen Output
- 100% Rebuildable
- Aerospace Construction
- Made in USA 

HD-16SD  
DOUBLE TRUNNION



HD-16SS  
SINGLE TRUNNION

### - APPLICATIONS REQUIRING SUPERIOR LIGHT OUTPUT -

The HD-16 is a direct replacement light for most standard equipment yet provides light levels up to 5 times brighter with better color rendering. Offered in two trunnion styles, the HD-16 can be installed just about anywhere including vertical surfaces. It features the same billet aerospace aluminum and stainless steel construction as found in the entire HD line, but in a more compact package. Integrated shock damping system absorbs high-frequency vibration while still allowing up to 360° of tilt.

#### STANDARD FEATURES

- CNC Machined Aerospace Aluminum is strong yet lightweight
- Stainless Steel Brackets and Hardware are durable and corrosion resistant
- Hardened and Tempered Pyrex Lens (Lexan Lens Optional)
- Mil-spec Anodized For Protection
- Advanced Thermal Management
- Transient Voltage Protection
- Over/Under Voltage Protection
- ZERO EMI Emission
- Gold Plated Electronics and Connector

#### OPTIONAL FEATURES

- Powdercoated Chassis and Bracket
- 5 Optical Beam Patterns
- Hardened Pyrex or Lexan Lenses
- 3 Different Power/Output Levels
- White, Amber, Red or Infrared Light
- 24V or Multi-Volt DC Input Voltages
- MIL-C-26482 Series II Connector
- Type III Anodized Chassis and Bezel
- Black Chromium Plated Hardware

# HD-16

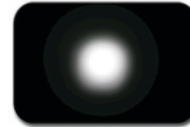
## HEAVY DUTY

### SPECIFICATIONS

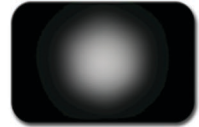
	HD16-85W	HD16-55W	HD16-35W
Power	85W	55W	35W
Operating Voltage	9-32VDC or 18-32VDC		
Raw Lumens	7,700	6,780	4,750
Effective Lumens	6,300	5,560	3,890
Current @28VDC	3.0A	2.0A	1.3A
Current @14VDC	6.1A	3.9A	2.5A
Lifetime (hrs)	55,000	75,000	105,000

Trunnion Style	Double	Single
Weight w/ Lexan Lens	2.91 lb (1.29kg)	2.73 lb (1.21kg)
Weight w/ Pyrex Lens	2.96 lb (1.32kg)	2.78 lb (1.24kg)
Shock Handling	>100G RMS	>30G RMS
Sealing	IP69K	IP69K
Tilt Angles	-20 to +40°	360°

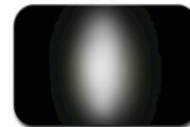
### BEAM PATTERNS



**SPOT**  
11°



**MEDIUM**  
26°



**V ELLIPTIC**  
23 × 36°



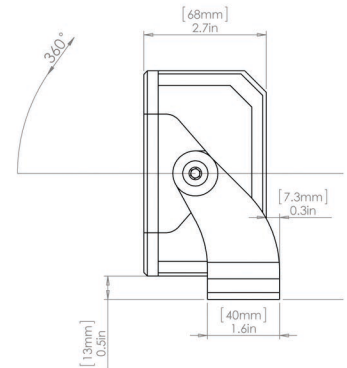
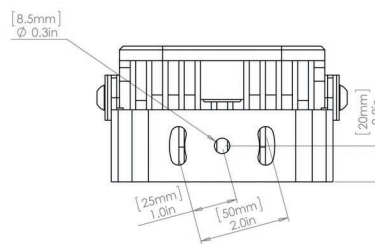
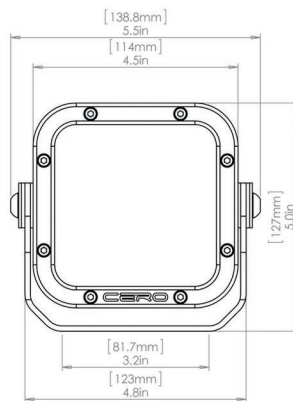
**H ELLIPTIC**  
36 × 23°



**WIDE**  
46°

### DIMENSIONS

#### HD-16S SINGLE TRUNNION



#### HD-16D DOUBLE TRUNNION

